



FIELD CAMERA

Premium affordable image capture for automated outdoor observations in remote environments

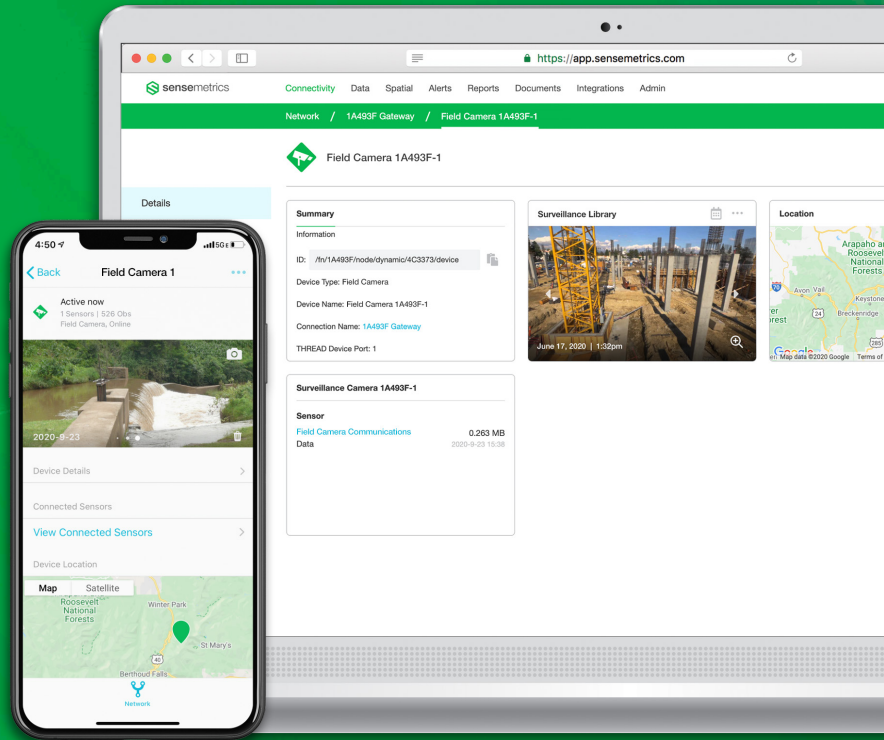
Our weatherproof outdoor camera is an easy to deploy solution for monitoring of site activities, asset performance, sensor measurement visual verification, or continuous image capture for change detection analysis. Low power operation, and a wide operating temperature range makes it ideally suited for installation in harsh environments.

AUTOMATED VISUAL OBSERVATIONS

Experience the seamless and cost-effective integration of automated remote visual observations with your condition monitoring program. Plug & play connectivity with the Thread broadband IoT connectivity device provides power, communication, edge controls and remote management of the automated image capture system. Securely capture, store, and forward images at interval, or based on alert conditions.

Secure to cloud-based storage via data lake repository for reporting, visualization, machine learning, and image analysis applications. Our mobile and browser applications provide simple and intuitive controls for field deployment and remote management of visual monitoring across a wide variety of applications, including:

- Construction Progress
- Site Activity
- Vehicle Patterns
- Obstruction Detection
- Seepage Monitoring
- Water movement and level
- Cloud Coverage Monitoring
- Vegetation Monitoring
- Snowfall Accumulation
- Forest fire detection



KEY FEATURES



Long-range infrared night vision



High visibility in low light conditions



HD quality still and time series image capture

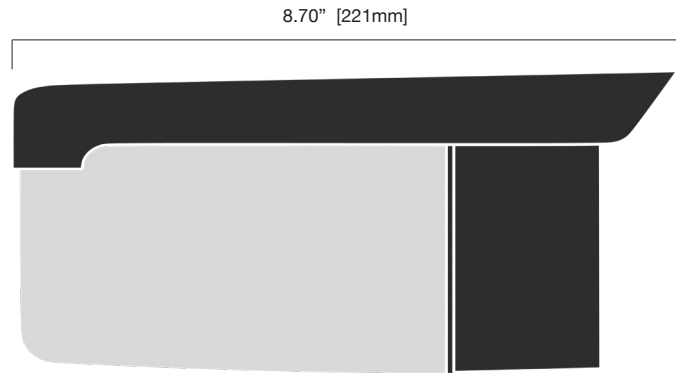
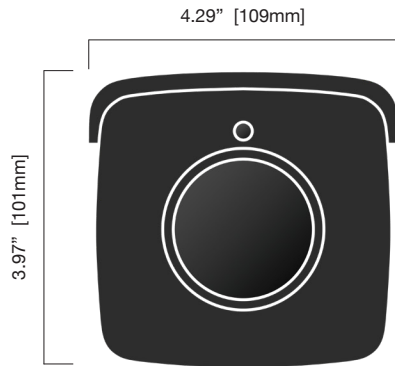


Waterproof IP67 enclosure



Wide operating temperature range

CAMERA SPECIFICATIONS



Dimensions:	8.70" (221mm) Length x 4.29" (109mm) Width x 3.97" (101mm) Height
Net Weight (with mount):	1lbs 8oz (800grams)
Image Device:	1/2.7" CMOS
Pixels:	2 Mega Pixels
Image Compression:	JPEG
Focal Length:	6 mm
Angle of View:	60 degree
Minimum Illumination:	0.005LUX
IR Illuminator:	Default 4pcs 850nm IR LED arrays
IR-Cut Filter Switcher:	Automatic built-in for daytime true color and night time black and white
Current Consumption	Typical <120mA
Night Vision Range	Up to 50 meters (164ft)
Exposure, White Balance, Auto Gain Control	Auto
Cable Length	13ft (4m)
Waterproof	IP67
Operating Temperature	-40°F~-180°F (-40°C~+85°C)